

The Datasheet of patch panel

Fiber optic patch panel provides efficient cable connections between outside plant cables and equipment inside the buildings and communications facilities.

Box integrates fiber splicing, storage and cable connections together in a unit. They can manage both bundle type and ribbon type fiber cables. It is with large working space to integrate the pigtail, cables and adapters for fiber management.

I. Fixed Rack-mount type:

1. Description:

This fixed type fiber optic patch panel is standard 19 inch design, cold roll steel box, fixed type, with metal front cover, adapter plate of 180x40mm can be unloaded; applicable to existing systems.

2. Features:

Cold-roll steel, electrostatic painting

ABS plastic tray inside, 12-24cores per tray

Different adapter plate available: FC, SC, LC, ST...

Suitable for 19" standard optic distribution cabinets

With front cover; 4 fiber cable entry ports at rear side

Cable entry ports suitable for single fiber, bundle & ribbon fiber cables

Reasonable design ensures the cables are in good order

Rack mouted fixed type, indoor using;

White, black, grey ... color painting optional

12, 24, 48, 96 ... capacity customised

3. Application:

Mainly used for cable inlet and fixing; fiber splicing and protecting; pigtail storage; patch cord storage, connection and use management between wiring closets and equipments.

Applicable to Telecommunications, Fiber to the home (FTTH), LAN / WAN, CATV ect. System projects.

4. Parameters:

Operating temperature: -5~+40℃

Relative humidity: ≤85%(+30℃)

Atmospheric pressure:70~-106Kpa

Durability: >1000 times

Standard working wavelength: 850nm, 1310nm, 1550nm

Fixed Rack-mount Fiber Patch Panel				
Model	Fiber Quantity	Height	Dimension(cm)	Weight(Kg)
ODF-RF12	12	1U	42x30x4.45	3.2
ODF-RF24	24	1U	42x30x4.45	3.4
ODF-RF48	48	2U	49x30x8.9	4.2
ODF-RF72	72	3U	49x30x13.35	6.3
ODF-RF96	96	4U	49x30x17.8	8.5
ODF-RF144	144	4U	49x30x17.8	9.2



Model	ODF-RF12
Core optional	12,24,48,96
Connector	FC,LC,SC,ST optional
Color	White, black

Model	ODF-RF24
Core optional	12,24,48,96
Connector	FC,LC,SC,ST optional
Color	White, black



Model	ODF-RF48
Core optional	12,24,48,96
Connector	FC,LC,SC,ST optional
Color	White, black

II. Slidable Rack-mount type:

1. Description:

Slidable fiber optic patch panel provides efficient cable connections between outside plant cables and equipment inside the buildings and communications facilities.

Box integrates fiber splicing, storage and cable connections together in a unit. They can manage both bundle type and ribbon type fiber cables. It is with large working space to integrate the pigtail, cables and adapters for fiber management.

This slidable type fiber optic distribution frame is standard 19 inch design, cold-roll steel box, can be slided out with sliding rails, no front cover, applicable for existing systems.

2. Features:

Cold-roll steel, electrostatic painting

ABS plastic tray inside, 12cores per tray

Different adapter plate available: FC, SC, LC, ST...

Slide out drawer for easy cable management

Suitable for 19" standard optic distribution cabinets

4 fiber cable entry ports at rear side

Cable entry ports suitable for single fiber, bundle & ribbon fiber cables

Reasonable design ensures the cables are in good order

Rack mouted slidable type, indoor using;

White, black, grey ... color painting optional

12, 24, 48, 96 ... capacity customised

3. Application:

Mainly used for cable inlet and fixing; fiber splicing and protecting; pigtail storage; patch cord storage, connection and use management between wiring closets and equipments.

Applicable to Telecommunications, Fiber to the home (FTTH), LAN / WAN, CATV ect. System projects.

4. Parameters:

Operating temperature: -5~+40℃

Relative humidity: ≤85%(+30℃)

Atmospheric pressure:70~-106Kpa

Durability: >1000 times

Standard working wavelength: 850nm, 1310nm, 1550nm

Slidable Rack-mount Fiber Patch Panel

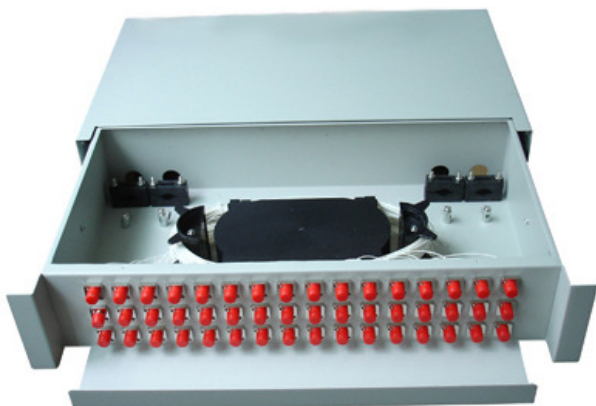
Model	Fiber Quantity	Height	Dimension(cm)	Weight(Kg)
ODF-RS12	12	1U	45x 32x4.45	4
ODF-RS24	24	1U	45x 32x4.45	4.2
ODF-RS48	48	2U	48x32x8.9	4.31
ODF-RS96	96	2.5U	48x32x11	5.05



Model	ODF-RS12
Core optional	12,24,48,96
Connector	FC,LC,SC,ST optional
Color	White, black



Model	ODF-RS24
Core optional	12,24,48,96
Connector	FC,LC,SC,ST optional
Color	White, black



Model	ODF-RS48
Core optional	12,24,48,96
Connector	FC,LC,SC,ST optional
Color	White, black



Model	ODF-RS96
Core optional	12,24,48,96
Connector	FC,LC,SC,ST optional
Color	White, black

III. Rack mount Distribution Box (ODF):

1. Description:

Rack-mount fiber optic distribution frame is made of cold-rolled steel, modular design, with splice tray units inside and could be pre-installed with various kinds of fiber optic adapters and pigtails. The proper design controls the bend radius of the cable inside the enclosure to avoid extra optical loss.

2. Features:

- + Modular design with splicing and distribution function
- + 12 cores distribution and splicing unit has the function of storage for maximum 2m pigtail
- + Splice tray units inside changeable
- + Various panel plates to fit different adapter interface
- + Can be fit for the pigtail or ribbon fan-out pigtail, suitable for 19" or 23" standard ODF
- + Standard size, light weight and reasonable structure
- + The mark in the front panel is for the easy identification, easy operation

3. Application:

Mainly used for cable inlet and fixing; fiber splicing and protecting; pigtail storage; patch cord storage, connection and use management between wiring closets and equipments.

Applicable to Telecommunications, Fiber to the home (FTTH), LAN / WAN, CATV ect. System projects.

4. Parameters:

Operating temperature: -5~+40℃

Relative humidity: ≤85%(+30℃)

Atmospheric pressure:70~-106Kpa

Durability: >1000 times

Standard working wavelength: 850nm, 1310nm, 1550nm

Rack mount Distribution Panel (ODF)				
Model	Fiber Quantity	Height	Dimension(cm)	Weight(Kg)
ODF-R12	12	1U	49x30.5x4.45	3.5
ODF-R24	24	2U	49x30.5x8.9	4.6
ODF-R36	36	2U	49x30.5x8.9	5.7
ODF-R48	48	3U	49x30.5x13.35	7
ODF-R72	72	4U	49x30.5x17.8	9
ODF-R96	96	5U	49x30.5x22.25	11
ODF-R144	144	7U	49x30.5x31.15	17.1



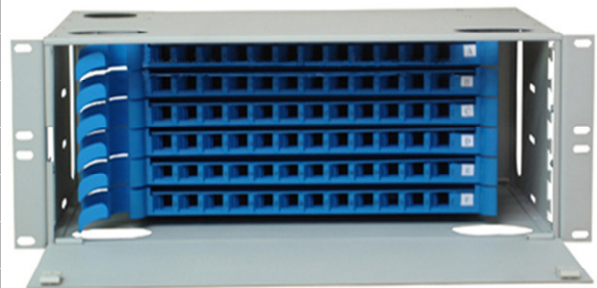
Model	ODF-R24
Core optional	12,24,48,96
Connector	FC,LC,SC,ST optional
Color	White, black



Model	ODF-R36
Core optional	12,24,48,96
Connector	FC,LC,SC,ST optional
Color	White, black



Model	ODF-R48
Core optional	12,24,48,96
Connector	FC,LC,SC,ST optional
Color	White, black



Model	ODF-R72
Core optional	12,24,48,72,96
Connector	FC,LC,SC,ST optional
Color	White, black



Model	ODF-R96
Core optional	12,24,48,96
Connector	FC,LC,SC,ST optional
Color	White, black



Model	ODF-R144
Core Optional	12,24,48,96,144
Connector	FC,LC,SC,ST optional
Color	White,black

IV. Indoor wall type Distribution Box:

1. Description:

Fiber optic distribution frame provides efficient cable connections between outside plant cables and equipment inside the buildings and communications facilities.

Box integrates fiber splicing, storage and cable connections together in a unit. They can manage both bundle type and ribbon type fiber cables. It is with large working space to integrate the pigtail, cables and adapters for fiber management.

This fiber optic distribution frame is designed for indoor wall mounted using, cold-roll steel, with adapter plate & splice trays at one side for fiber splicing, distribution and management.

2. Features:

Cold-roll steel, electrostatic painting

ABS plastic tray inside, 12cores per tray

Splice trays in one side or both sides available

Different adapter plate available: FC, SC, LC, ST...

Cable entry ports suitable for single fiber, bundle & ribbon fiber cables

Reasonable design ensures the cables are in good order

Wall mouted type, indoor using; pole mounted available

With lock on front door

8, 12, 24, 48, 96 ... capacity customised

3. Application:

Mainly used for cable inlet and fixing; fiber splicing and protecting; pigtail storage; patch cord storage, connection and use management between wiring closets and equipments.

Applicable to Telecommunications, Fiber to the home (FTTH), LAN / WAN, CATV ect. System projects.

4. Parameters:

Operating temperature: -5~+40℃

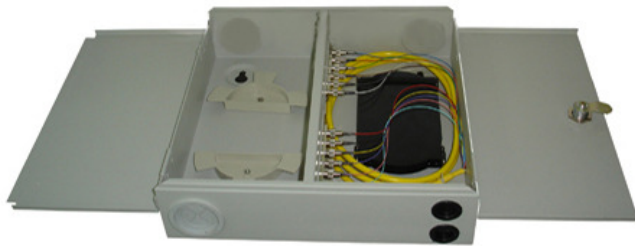
Relative humidity: ≤85%(+30℃)

Atmospheric pressure:70~-106Kpa

Durability: >1000 times

Standard working wavelength: 850nm, 1310nm, 1550nm

Indoor wall type Distribution Box				
Model	Fiber Quantity	Height	Dimension(cm)	Weight(Kg)
ODF-IW12B	12	\	30x30x8.5	3
ODF-IW24	24	\	40.5x38.2x8.5	4.2
ODF-IW48	48	\	40x38x14	5.8
ODF-IW96	96	\	56X48X26.5	11.5



Model	ODF-IV12B
Application	Indoor using
Core optional	12,24,48,96
Connector	FC,LC,SC,ST optional



Model	ODF-IV24
Application	Indoor using
Core optional	12,24,48,96
Connector	FC,LC,SC,ST optional



Model	ODF-IV48
Application	Indoor using
Core optional	12,24,48,96
Connector	FC,LC,SC,ST optional

V. Outdoor wall type Distribution Box:

1. Description:

Fiber optic distribution frame provides efficient cable connections between outside plant cables and equipment inside the buildings and communications facilities.

Box integrates fiber splicing, storage and cable connections together in a unit. They can manage both bundle type and ribbon type fiber cables. It is with large working space to integrate the pigtail, cables and adapters for fiber management.

This fiber optic distribution frame is designed for outdoor wall mounted using, cold roll steel material, with adapter plate & splice tray at one side for fiber splicing, distribution and management.

2. Features:

Cold-roll steel, electrostatic painting

ABS plastic tray inside, 12cores per tray

Splice trays in one side or both sides available

Different adapter plate available: FC, SC, LC, ST...

Cable entry ports suitable for single fiber, bundle & ribbon fiber cables

Reasonable design ensures the cables are in good order

Wall mouted type, outdoor using, IP65; pole mounted & bottom base available

With lock on front door

12, 24, 48, 96 ... capacity customised

3. Application:

Mainly used for cable inlet and fixing; fiber splicing and protecting; pigtail storage; patch cord storage, connection and use management between wiring closets and equipments.

Applicable to Telecommunications, Fiber to the home (FTTH), LAN / WAN, CATV ect. System projects.

4. Parameters:

Operating temperature: : -30~+60℃

Relative humidity: ≤85%(+30℃)

Atmospheric pressure:70~-106Kpa

Durability: >1000 times

Standard working wavelength: 850nm, 1310nm, 1550nm

Outdoor waterproof wall type Distribution Box

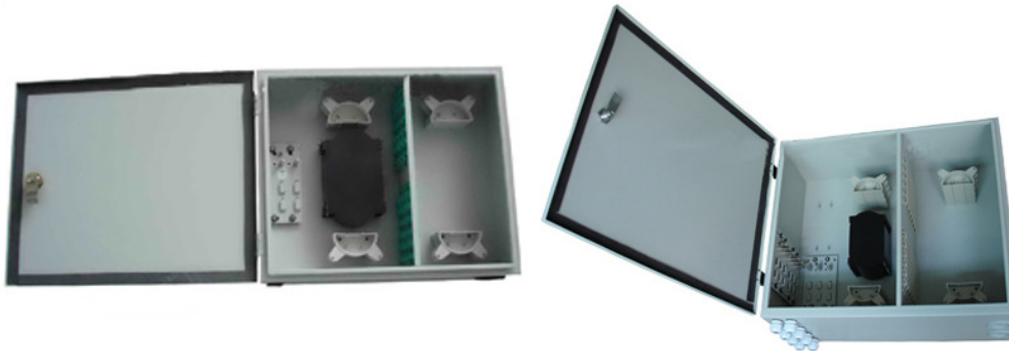
Model	Fiber Quantity	Height	Dimension(cm)	Weight(Kg)
ODF-OW12	12	\	46.5x 38.3x 11	6.3
ODF-OW24	24	\	46.5x 38.3x 11	6.3
ODF-OW48	48	\	46.5x 38.3x 15.5	7
ODF-OW72	72	\	56 x 48 x 21.2	12

ODF-OW96	96	\	56x 48x 26.5	14
----------	----	---	--------------	----



Model	ODF-OW24
Application	outdoor,water-proof
Core optional	12,16,24,36,48,72,96
Connector	FC,LC,SC,ST optional

Model	ODF-OW24A
Application	outdoor,water-proof
Core optional	12,16,24,36,48,72,96
Connector	FC,LC,SC,ST optional



Model	ODF-OW48
Application	outdoor,water-proof
Core optional	12,16,24,36,48,72,96
Connector	FC,LC,SC,ST optional

Model	ODF-OW72
Application	outdoor,water-proof
Core optional	12,16,24,36,48,72,96
Connector	FC,LC,SC,ST optional



Model	ODF-OW96
Application	outdoor,water-proof
Core optional	12,16,24,36,48,72,96
Connector	FC,LC,SC,ST optional