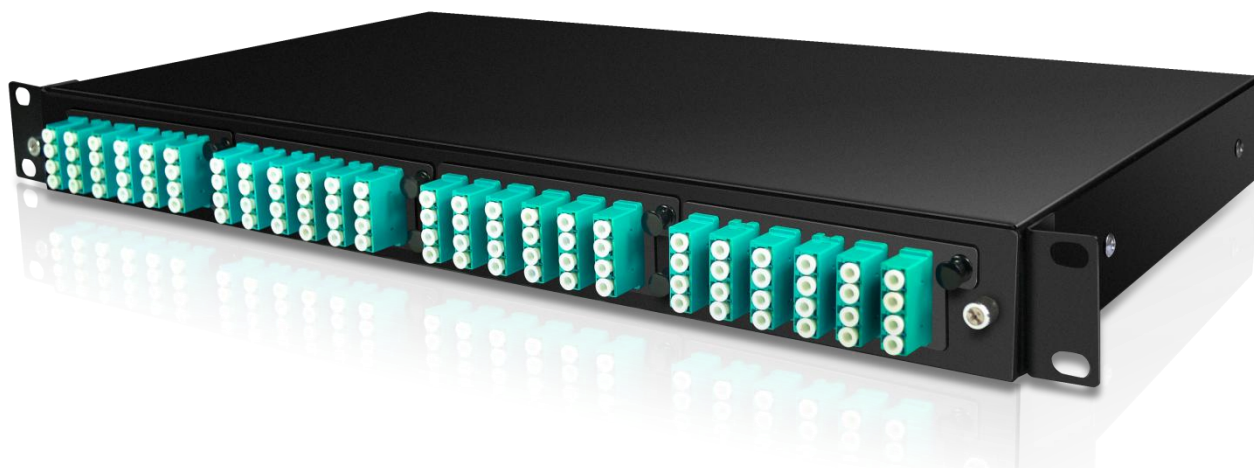


## MPO Patch Panel Specification



### Product description:

MPO-LC Type Distribution Box in line with the network development trend of high density high capacity, MPO interface of multi-channel signal switching to LC type interface, the module box encapsulation structure, collocation to the wiring boxes, compact structure, high density, use convenient operation. It can be installed in a 19-inch standard integrated distribution box, network cabinet and open frame. Connect the optical path terminal. It is made of high quality cold rolled sheet material, surface electrostatic spraying treatment, no impurities, no bubble, and even color.

### Application:

- ★. Telecommunications subscriber loop
- ★. Fiber to the home (FTTH)
- ★. LAN/WAN
- ★. CATV

### Features:

- . Suitable for 19 inch standard frame.
- . Suitable for ribbon and single fiber.
- . Compact design for space saving.
- . Front mark on the plate is easy for identification and operation.
- . Standard size, light weight and reasonable structure.
- . Easy for management and operation.
- . Modular design, which can be used in multiple module boxes and configured in MPO-LC Type Distribution Box.
- . The MPO ribbon multi-core fiber is divided into multiple lc interfaces to realize parallel conversion of MPO-LC.

**Mechanical and environmental characteristics:**

Projects	Parameter
Operating temperature	-25°C~+40°C
Storage temperature	-25°C~+55°C
Relative humidity	≤85%(+30°C)
Air pressure	70Kpa~106Kpa
Color	Black

**Specifications and Models:**

Model	MPO-LC Type Cassette Quantity	Height	Dimension(LxWxH)
MPO-LC	4	1U	482mmx250mmx44.5mm

**Dimension:**

